

Derbyshire Makes

Swadlincote



**POTTERY | WOODCRAFTS | ENDANGERED SKILLS | ANIMATION | DIGITAL ART | TEXTILES
LOCAL HERITAGE | MAKERS MARKET | PHOTOGRAPHY | FINE ART | AND SO MUCH MORE**

Saturday 25 April 2026

10.00am - 4.00pm

(Some times may vary)

derbyshiremakes.co.uk/swadlincote



Supported using public funding by
**ARTS COUNCIL
ENGLAND**



Supported by the
National Forest



CLAIRE WARD
MAYOR OF THE
EAST MIDLANDS



East Midlands
Combined County
Authority



Made possible with
**Heritage
Fund**



Burton and
South Derbyshire
College

WELCOME

Join us on Saturday 25 April for a fun-filled day of creativity and community in the heart of Swad!

Our free festival invites people of all ages to get hands-on, and explore making in all its wonderful, magical forms. Like threads woven together, South Derbyshire's past, present and future are closely connected. From mining and pottery to textiles and flax-growing, these skills, industries and stories continue to influence how people live, make and create today.

Meet local artists including our Forest Makers whose nature friendly craft practices are growing in the heart of the National Forest. Be inspired at brand new exhibitions and enjoy exciting performances across some of Swadlincote's favourite town centre venues.

Why not roll up your sleeves at our SUNBURST workshops at Magic Attic, where you'll learn about Bretby Art Pottery and have a rare chance to make your own Sunburst logo using clay and a mould (a 3D scanned replica from the 1890s original and the only one in the world!)

Or visit the LAMPLIGHT project in the Glaze Room of Sharpe's Museum to meet John, who shares the story of his local community. Then head out with your phone to the High Street and listen to new oral histories captured by South Derbyshire Mining Preservation Group.

Derbyshire Makes Swadlincote is a chance to reconnect with local stories, learn new skills and celebrate the power of making together.

Whether you're curious, creative, or just looking for a great day out, everyone is welcome.

Derbyshire Makes

Saturday 25 April, 2026 10am - 4pm

(unless another time specified) No Booking required - All FREE!

Festival at a glance...

Sharpe's Museum, Upper Gallery

Workshops Making Miniatures - Shops, Models and Birds
Exhibition ClayMates

Sharpe's Museum, The Kiln

Exhibition Stitches in Time Banners
Workshop Songwriting with Sonic Boom 10am & 3pm
Performance 5 in Harmony 11am and 12.30pm
Performance The Coal Tits 1.30pm

Sharpe's Museum, The Glaze Room

Workshop Animating Archives with Youth Landscapers
Performance Lamplight Audio Trail

Sharpe's Museum, Magic Attic

Workshop SUNBURST Welcome to the Bretby Art Pottery Family

Sharpe's Museum, The Courtyard

Workshops Pottery making
Performance Oddstuff Heritage Walk starts here at 10.30am

Sharpe's Museum, Shop

Exhibition Burton and South Derbyshire College Bargeware

Sharpe's Museum, Shop

Workshop Nature inspired Jewellery Making

Sharpe's Museum Sweet Caroline Café

Exhibition Featuring Melbourne Festival Artists

People Express, Downstairs

Workshop By Lamplight Tunnel Books
Workshop Repair Café 10am and 1pm

People Express, Upstairs

Exhibition Burton and South Derbyshire College Photo Canopy

High Street (Church Street end)

Performance The Giant Wheel Parade 11.30am and 2pm
Performance Wilkes' Gob Border Morris 1.30pm

Town Hall

Exhibition South Derbyshire in Stitches Swadlincote Quilt

Town Hall

Workshops Crochet, weaving, spinning and string making

Library, Upstairs

Workshop Japanese bookbinding

Library, Main Floor

Workshop Book folding

Library, Ground Floor

Workshop Community PoetTree

The Delph

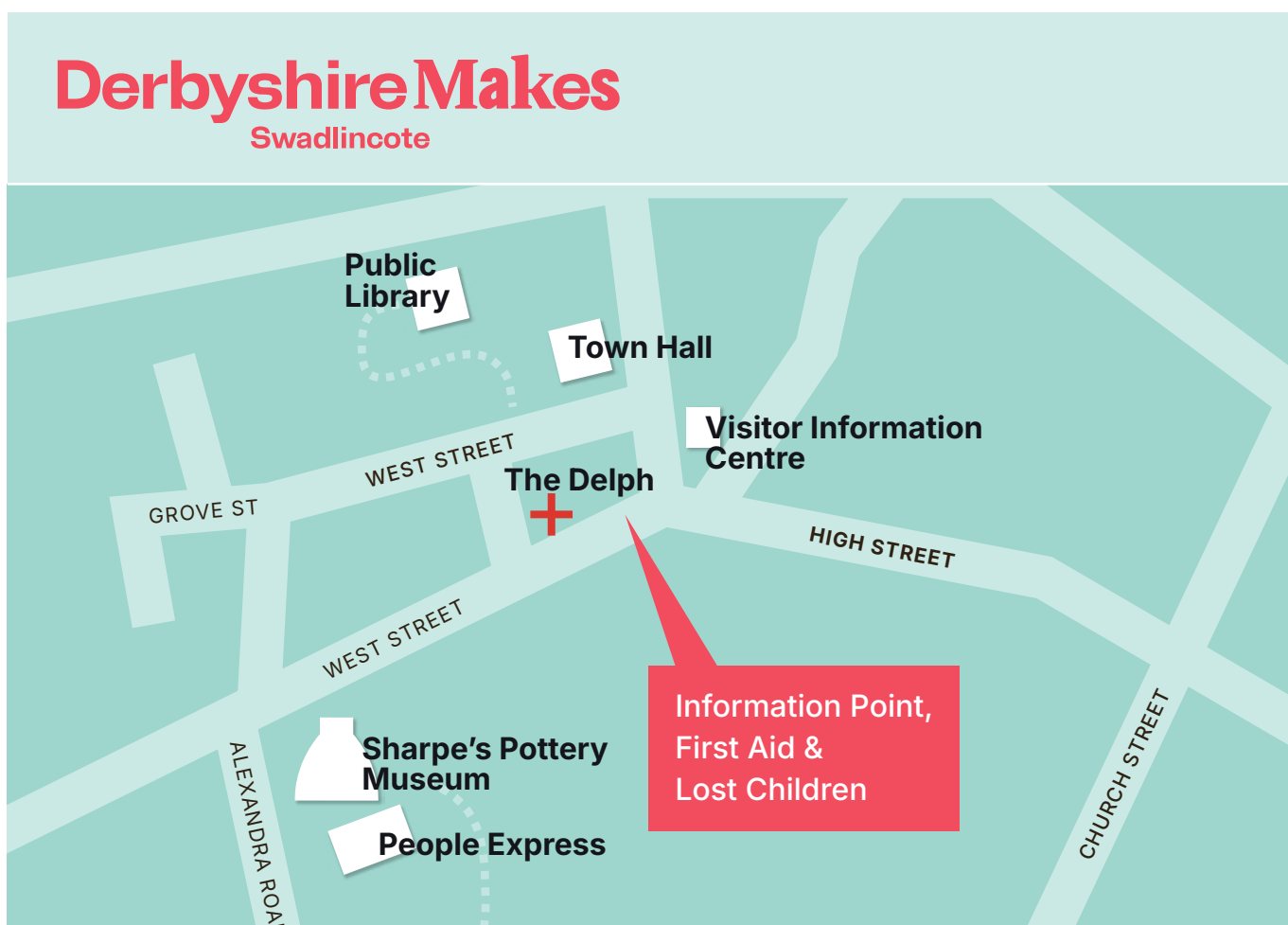
Exhibition Burton and South Derbyshire College Pop-up Galleries

The Delph

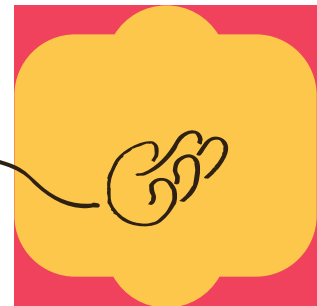
Workshops Forest Makers

The Delph

Performance Wilkes' Gob Border Morris 12.30pm



WHAT'S ON!



THINGS TO DO AND TRY... WORKSHOPS AND DEMOS

Bringing our South Derbyshire heritage to life, from mining and pottery, to textiles and flax-growing, the festival will celebrate the power of making together.

SHARPE'S POTTERY MUSEUM



Making Miniatures Workshops

Saturday 25 April 10am - 4pm
Sharpe's Pottery Museum - Upper Gallery

3 Workshops making Birds, Models and Shops in Boxes

Stephanie Coley is a mixed media artist born in Derbyshire, where she lives and works. Her art process is instinctive and playful, letting materials dictate how she uses them, juxtaposing images, text, colour and shape and allowing paint to run & flow. Steph will share her passion for creating and working with all sorts of materials and backstories to make miniature shops in boxes inspired by Swadlincote High Street's Salt Brothers (Enoch, Joseph and Hezekiah) Stores - 1890's to 1982.

Jo Litchfield is a modelmaker, writer and illustrator based in Derbyshire. She works in all kinds of media but is best known for her children's books and has illustrated over 100 titles, which have sold millions worldwide. For the festival, she will bring a selection of models from her books, as well as some specially made miniatures inspired by the doll's house at the museum. She'll be there with tips, tools and materials for people to make their own miniatures to take home.

Sasha Archer - join Sasha to explore local birds and craft your own garden bird. Will it be one that we've seen before or something newly imagined? Garden birds are a common sight in the UK, but a lot of people don't know that they have more benefits than just being pretty to look at and providing us with bird song. We would be in a lot of trouble if we didn't have our garden birds! Did you know that they do a lot for our environment? They provide pest control, spread seeds from place to place and pollinate plants crops and flowers.



ClayMates Exhibition

11 April - 22 May - Museum Opening Hours
Sharpe's Pottery Museum - Upper Gallery

A vibrant display of hand-crafted clay figures, each uniquely designed by young makers to reflect their community, creativity, and imagination. "Working with South Derbyshire young makers from **The Pingle Academy** and **Belmont Primary**, we are creating our very own family of extraordinary clay people, inspired by our community and our own hopes and dreams. These expressive and fun figures will be individually designed by each young person and created in clay, using a number of traditional hand-building ceramic skills. Each figure is unique and has carved, stamped, imprinted and modelled features, clothes and decorations made using our own hands, clay tools and found objects".
Elaine Lim-Newton (Ceramics Artist).

THE KILN



Stitches in Time Exhibition

11 April - 22 May - Museum Opening Hours
Sharpe's Pottery Museum - The Kiln

In 1991 and 1992, textile artist **Fiona Goodwin**, commissioned by People Express, worked in 19 towns and villages across South Derbyshire, meeting with people of all ages to discuss what was important and unique about their villages and towns. Fiona then worked alongside them, with a selected colour palette, to create 19 'Bayeux Tapestry' inspired unique wall-hanging textile banners, each telling the story of local heritage and shown together as the wonderful 'Stitches In Time' Exhibition. Now, over 30 years later, you can see them again in their full glory!



Songwriting with Sonic Boom Workshop

Saturday 25 April 10am and 3pm
Sharpe's Pottery Museum - The Kiln

Join talented local young musicians, **Carl North, Leah Wilcox, Jemma J and Andy Crowe** as they lead an interactive 'on the spot' songwriting session. Come share your ideas, lyrics, melodies and themes. No experience required - just curiosity, creativity and a willingness to take part. Join them as they bring the new song to life, recording and producing it on site and finally, in the late afternoon, you can help us celebrate as the new track is both performed 'live' and released into the world. This is a rare chance to see the songwriting, recording and performance all happen in a day.



Performance: 5 in Harmony

Saturday 25 April 11am and 12.30pm
Sharpe's Pottery Museum - The Kiln

5 In Harmony is an all-male acapella group from the Swadlincote/Measham area formed in 2015. Their show will be easy listening, including: The Swad Song by **Terry Bourne** (sung in local dialect), folk songs, 60's, songs from shows & also other local songs such as Where Do You Go To Me Duck, as well as monologues penned by **John Worker**. The other 3 members of the group are **Phil Lunn, Keith Mitchell & Terry Jones**, are also in The Gresley Male Voice Choir.



Performance: The Coal Tits

Saturday 25 April 1.30pm
Sharpe's Pottery Museum - The Kiln

The Coal Tits celebrate the past present and future of the National Forest writing and performing post-industrial original folk songs. The Coal Tits released a digital album on Bandcamp in November if you would like to check out their songs.

THE GLAZE ROOM



Animating Archives Workshop

Saturday 25 April 10am - 4pm
Sharpe's Pottery Museum - Glaze Room

Youth Landscapers invite you to bring local histories to life with digital technology. **Kris, Alfie, Jeff and Claire** will help you explore artefacts from the local mining community using microscopic filming and photogrammetry. See 'Cards of Sympathy', a film inspired by a young local miner at the former Rawdon Colliery. Youth Landscapers Collective is a group of young people aged 13-23 from the National Forest area who explore and share the landscape's industrial past and forest future through creative projects. To find out more visit www.youthlandscapers.com



STORIES FROM SOUTH DERBYSHIRE'S MINING PAST

Lamplight Audio Trail Exhibition

Saturday 25 April 10am - 4pm
Sharpe's Pottery Museum - Glaze Room

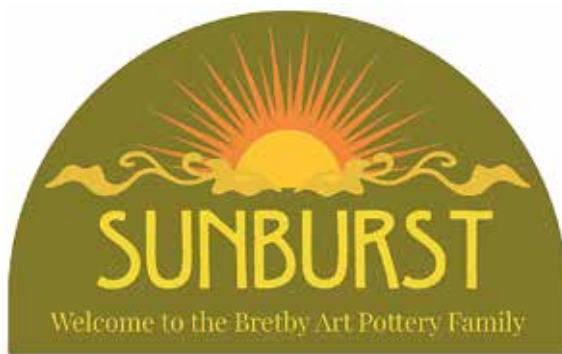
Stories from South Derbyshire's Mining Past

Much of South Derbyshire's history lies beneath your feet - step back in time with LAMPLIGHT and meet John who shares the story of his local mining community. Then grab a map (or download one), and head out into Swadlincote to explore the LAMPLIGHT Heritage Trail. Stop off at the key sites, starting along the High Street, and listen to a new set of oral histories recently recorded by South Derbyshire Mining Preservation Group. The Trail will take you to former Colliery sites, the mining memorials and the much-loved Miner's Welfare. The Trail starts at Sharpe's Museum, then onto High Street and beyond, Swadlincote.

Supported by Derbyshire Makes History.



THE MAGIC ATTIC



Sunburst Workshop

Saturday 25 April 10am - 4pm
Sharpe's Pottery - The Magic Attic

Why not roll up your sleeves at our SUNBURST workshops at Magic Attic, where you'll learn about Bretby Art Pottery and have a rare chance to make your own ceramic logo. The workshop moulds you will be using are 3D-scanned and 3D printed mini-replicas of the 1890s original, which is the only one in the world. SUNBURST introduces you (in a fun way!) to forgotten production techniques, how people used moulds in making, local design and decoration, who did what in the local Potteries workforce and historic craft techniques.

You can also browse Magic Attic's amazing archive and explore their new exhibition - the story of Bretby Art Pottery told through its Family Tree. Meet key family members like Henry Tooth and John Wragg, and it will explore its historic connections with other businesses like Sharpe's, Aults and Denby.

Supported by Derbyshire Makes History.

THE COURTYARD



Pottery Workshops

Saturday 25 April 10am - 4pm
Sharpe's Pottery - Courtyard

Ever wanted to have a go on a potter's wheel? Now's your chance! Join **Derek Harbinson** for live demos of throwing bowls, vases and more - and then have a go yourself. No need to book, just drop by and have a go. Derek Harbinson is a Derbyshire-based ceramicist appeared on the Great Pottery Throwdown. He takes inspiration from a 1970s childhood, imagined civilisations and space travel, all bound up with mid-century style!

Get hands on with clay with ceramicist **Elaine Lim-Newton** and learn simple hand-building techniques, make your own fabulous Clay Mates people with a brilliant mix of stamps, textures, and found objects. All ages welcome, no experience needed! Elaine creates contemporary ceramic sculptures and homewares that are inspired by and combine her love for natural forms, contrasting architectural structures and her dual British and East Asian heritage.



Performance: Oddstuff Heritage Walk with Music

Saturday 25 April
10.30am (short accessible walk 50 mins)
Sharpe's Pottery Museum - Courtyard

A relaxed, story-filled heritage walk blending local history, nature and live music, with space to share your own memories along the Way. **Hazel McDowell** is an experienced walker, leading local walks for the National Forest and now Derbyshire Makes. Hazel likes to perform songs written by The Coal Tits, which relate to the places she leads walks. Audience participation is encouraged and you are welcome bring your own stories to share as part of this walk.

SHOP



Burton and South Derbyshire College Bargeware Exhibition

Saturday 25 April 10am - 4pm
Sharpe's Pottery Shop

Media students have created a new ceramics exhibition inspired by Bargeware. Bargeware is a distinct type of 19th-century British pottery, characterised by a treacle-brown glaze, applied white clay decoration (flowers, leaves, birds), and personalised inscriptions. Primarily produced in Derbyshire between 1870-1910, these items were popular, affordable souvenirs for canal boat people, often featuring phrases like "A Present from a Friend".



Nature Inspired Jewellery Making Workshop

Saturday 25 April 10am - 4pm
Sharpe's Pottery Shop

Louise Mary is an artist, silversmith and jeweller and her studio is located in Sharpe's Pottery Museum. She creates contemporary nature inspired designs, handcrafted using traditional techniques. She runs a range of workshops including her award winning 'Make your own wedding rings' workshops. You can book onto her brilliant making workshops via her website louisemarydesigns.co.uk

At the festival, Louise will be running an interactive demo, making her jewellery and inviting you to have a go!



CAFÉ



Melbourne Festival Artists Exhibition

11 April - 22 May - Museum Opening Hours
Sharpe's Pottery - The Café

Creative Melbourne Gallery is excited to share a flavour of what is in store in the Gallery this summer.

Meet: **Fiona Marks**, whose vivid artworks build texture from historical textiles, **Sue Gardner**, celebrating nature with her expressive brushstrokes and vibrant palette and **Amanda Hughes**, discovering the joy of abstract watercolours.

www.creativemelbourne.co.uk

Our exhibitions change every 4 to 6 weeks!



SPOTLIGHT ON!

Rachel Thorpe

Lamplight with Rachel Thorpe, Education and Communication Officer for South Derbyshire Mining Preservation Group (SDMPG) & Mel Biggs, Freelance Arts Coordinator, Folk Musician, Project Manager & Audio Trail Producer.

The South Derbyshire Mining Preservation Group meets at Sharpe's Museum on Tuesdays from 10 am - 12 pm, and anyone with an interest in mining can come along. Rachel is an oral history researcher and wanted to establish an accessible archive for the SDMPG. Lamplight is unique and significant to this area, preserving memories while we still have them and leaving a lasting legacy. Folk Musician and local heritage enthusiast, Mel Biggs has composed an original piece of music for the beginning and end of each track which represents her response to the graft and sounds of a mining conveyor belt.

Rachel was only one when the area's last coal mine closed. Her dad and grandad were miners, and she grew up with stories from the pits,

'When my mum and nan went to bingo, I sat and listened to my grandad's stories of his time in the pit. Now I'm doing a PhD titled 'Me grandad worra pit mon'. There's always a funny tale, such as a pub competition to smash up pianos as fast as possible, or emotional stories shared. It's personal for me as my grandad died over 10 years ago, and these things won't be remembered if it isn't recorded.'

Lamplight is an audio trail taking you on a tour around mining-significant sites in Swadlincote. Pick up a trail map at Sharpe's, and you can scan a QR code on your phone to hear about the locations along the trail, starting with the Glaze Room in the Museum. Hear snippets from local people who remember the local mining industry and other stories. There are 9 locations on the trail with a different listening experience at each spot, including Gresley Old Hall and Owd Shoddy Memorial in Eureka Park. Find out more about the trail on the website: sdmpg.webador.co.uk/lamplight-trail

We're very proud of it!

PEOPLE EXPRESS DOWNSTAIRS



By Lamplight Tunnel Books Exhibition

Saturday 25 April 10am - 4pm
People Express - Downstairs

Jenny Stevenson is a mixed media collage artist. Her place-based practice explores memory, architecture, local industries and community stories. Jenny has worked on a community project inspired by local mining heritage, creating 'tunnel books' with layered paper, collage, simple structures and light. Together, the sculptural books form a stunning exhibition reflecting underground spaces, hidden labour and the passage of time. Come and be inspired and have a go at making one!

Repair Café Workshop

Saturday 25 April
People Express - Downstairs

10am **Kev Baldwin** - Mechanical/Minor Electrical/battery clocks
11am **Bob Elliott** - Guitars
12pm **Andrew Ramsey** - Mechanical/Electrical/Textiles

Repair Cafe is volunteer-powered and is designed to help members of our community to repair, reuse, and recycle. We want to encourage you to explore the benefits of the circular economy in action. Circularity is about Creative Compassionate Collaborative Communities. We achieve this through living our values... circularity.org/repair-cafe

PEOPLE EXPRESS UPSTAIRS



CANOPY Exhibition

Saturday 25 April 10am - 4pm
People Express - Upstairs

CANOPY is an in-house art programme at **Burton and South Derbyshire College** designed to bring students and professional artists together to create contemporary work in response to The National Forest.

Each piece embodies the spirit of CANOPY: collaboration, curiosity, and the exploration of place through multiple lenses. The outcomes from this unique international partnership will be showcased at Derbyshire Makes Festival, offering audiences a glimpse into what happens when creative learners from across the world unite around a single theme. Their collective work demonstrates not only the power of interdisciplinary practice but also how global connections can deepen our understanding of local landscapes. This year, the project has grown even richer through a unique international partnership between Kosen learners from Japan.

HIGH STREET - CHURCH STREET END



Performance: Autin Dance Theatre Parade Giant Wheel

Saturday 25 April 11.30am and 2pm
Start High Street (Church Street end)
finish on The Delph

A moving performance inspired by the beauty, power and impact of people from different walks of life coming together.

Featuring a 12-foot tall Giant Wheel powered by 5 dance artists and accompanied by music and large community cast of local groups and individual performers. **Autin Dance Theatre** uses its unique blend of contemporary storytelling, striking physicality and innovative large designs to transport audiences and communities along a carefully choreographed procession.

The 50-minute itinerant act is punctuated by 3 static moments that celebrate the tension and fracture between our individual identities and our shared collective humanity. Ultimately, Parade is about celebrating different journeys whilst honouring our shared life struggles.

The Giant Wheel carries the performers high above the streets, spins them around ferociously, turning their worlds upside down, at times giving them momentum and speed, and at others rocking them gently back and forth imitating the laborious and repetitive cycle of life.



Performance: Wilkes' Gob Border Morris

Saturday 25 April
The Delph 12.30pm
High Street (Church Street end) 1.30pm

Ay up mi duck! Moulded from the brickyards of South Derbyshire and North West Leicestershire, **Wilkes' Gob Border Morris Dancers** tell the stories of their industrial and cultural heritage through an inspiring, modern take on traditional dance and music.

Named after an over-sized brick ("the Gob"), developed by the prolific local industrialist, Joseph Wilkes, Wilkes' Gob will illuminate our important local history in an engaging performance to entertain and educate in equal measure.

The **Swadlincote Asperger's Society (SAS)** have been working with members of Wilkes' Gob and dance and movement psychotherapist **Sara Rose** in the lead up to the festival to learn some Border Morris moves and put together their own Border Morris dance. Come and see their Morris showcase as part of the Wilkes' Gob dance spot on The Delph 12.30 - 1pm.

If you fancy giving Border Morris a go, join Wilkes' Gob at 1.30 at the Church End of the High Street to learn a simple Morris dance with a stick! **No experience necessary, all instructions given.**

TOWN HALL



South Derbyshire In Stitches Exhibition

Saturday 25 April 10am - 4pm
Town Hall

Sharon Brown (see photo) from Melbourne festival has set up the very popular South Derbyshire In Stitches project. A series of beautiful quilts is being created by communities in Swadlincote and Melbourne to celebrate South Derbyshire and the memories that turn it into somewhere special.

In Stitches is an exciting new project to encourage local people to come together and make a patchwork showcasing the best of South Derbyshire - its architecture, industries, produce, ducks and landscape.



Workshop: Weaving & Spinning

Saturday 25 April 10am - 4pm
Town Hall

Derbyshire Guild Weavers, Spinners & Dyers are a lively group with a diverse membership. At a local level, they not only work to learn, apply, and maintain skills, but also promote a more sustainable alternative offering demonstrations, access to resources and support and encouragement not as 'the guardians of a bygone era. Come along to see them at work and have a go on a spinning wheel and using a drop spindle.



Demonstration: Weaving

Saturday 25 April 10am - 4pm
Town Hall

Watch the magic of weaving come to life with Jo Stevens (aka Elements by Jo) as she works on her beautiful Ashford loom. Inspired by polaroid snaps she takes herself, Jo creates cosy 'hugs in a rug' mini shawls filled with texture and story. Swing by to see the process in action - and maybe even have a go!



Demonstration: String Making

Saturday 25 April 10am - 4pm
Town Hall

Katherine Parrish is part of Whistlewood Common a community owned woodland in Melbourne where they promote sustainable crafts and living. Katherine will be demonstrating how to make string out of natural fibres, particularly New Zealand Flax, which they grow in their forest garden. String can also be made from nettles, tree bark and brambles, in fact from most plants. Come and have a go at this ancient craft.



Workshop: Crochet

Saturday 25 April 10am - 4pm
Town Hall

Try your hand at crochet with Carly Beavis, no experience is necessary and all materials are provided for 2 people at a time to get started. Carly taught herself to crochet 8 years ago, then in 2020 with more time on her hands she started to challenge herself to make different items to sell. She loves to crochet as a creative outlet, that has helped with her mental health and ADHD.

'I sell lots of different items but my best sellers are plushy toys, baby comforters and crochet plants! I honestly love selling my items face to face as I love to see the reactions from people who come and take a closer look. I put my heart and soul into every piece so it is lovely to see them enjoyed by others'



SPOTLIGHT ON!

Sasha Archer

Jo Maker, Arts Manager for the National Forest, talks to artist Sasha Archer about her creative practice rooted in creativity, nature connection and care, and the influences that have shaped this.

JM: What are the core interests that drive your creative practice?

SA: My primary aim is for people to enjoy themselves and find freedom from daily stresses by becoming absorbed in a creative project, but I also want to inspire people to reconnect with their surroundings: the wildlife, the plants, the rocks and streams. I hope that through my work; I help others build a relationship with their environment, that they see a deeper beauty in it and therefore care for and wish to protect it.

JM: How do you connect people with these ideas and experiences?

SA: At the moment, it's mainly through hosting workshops and retreats. I'm currently preparing the creative element of a retreat that I co-host with 3 other incredible women. It's called 'Rooted' and between us we offer people the opportunity to slow down and craft, forage seasonal food, learn about wild medicine and eat the most delicious food. It really gives those taking part a chance to see where they fit in with the seasons, cycles, and their relationship to their environment.

I'm also hosting at Barefoot Festival where I'll be sharing two workshops. One is about our links to the seasons and cycles, and the other is a collective dreaming workshop. The collective dreaming workshop is one of my faves, and I often use elements from the National Forest for people to work with. I bring along items that I have worked with from the forest, think acorns, stones from Beacon Hill, leaves, that kind of thing. I place them in the middle of the circle for people to choose from and then lead them on a journey for guidance from the element they selected. At the end, they share their experience and it often leaves people stunned because they get the same or similar messages to each other.

JM: Do you find it challenging balancing nature connection as a subject with environmental responsibility as part of the practical delivery?

SA: This is a really interesting question, and the answer is yes, sometimes it is challenging. I aim to use recycled and thrifted materials, but this doesn't guarantee environmental benefit, and I frequently consider the lifespan of the finished items people make.

JM: How has nature recently inspired you?

SA: This week I visited Burbage Common and Woods for the first time, and I was absolutely thrilled to see the young shoots of jack-by-the-hedge popping up. I've been foraging for years, and every year I try some new recipes. Here are new ways that I want to use Jack by the hedge (garlic mustard): 1. I'm going to add it to my wild garlic pesto. 2. Add it to a wild greens focaccia. 3. Try it with a dandelion, wild garlic and nettle spanakopita, and 4. Add it to some pakoras which have the similar ingredients: nettle and dandelion leaf, wild garlic and three-cornered leek. My son adores lemon and nettle cake, so as soon as he sees the nettles arrive, that's his request. One of my friends made a carrot and nettle cake, so I want to give that a try this year.

JM: Could you describe how living in the National Forest has influenced your work?

SA: I think underlying everything I do, there's a deep love and connection to the National Forest which has expanded into a love of all nature. It's been a place that has supported me through so much, filled me with wonder and provided me with so many magical moments. I want to share this with others, to encourage them to see its beauty and just how special it is to have so many green spaces and some of the oldest rock formations in the world on our doorstep.

LIBRARY UPSTAIRS



Japanese Bookbinding Workshop

Saturday 25 April 10am - 4pm
Library - Upstairs

Learn how to recycle your paper, card and coloured threads into a beautiful loose-leaf Japanese-bound booklet with **Hannah Barker**. This ancient and unique technique (the earliest examples are by Buddhist monks in the 8th century) means your booklets open flat, which is quite different to traditional books. Hannah has been sitting at home practising her bookbinding for over 30 years! Find out how you can too!

LIBRARY MAIN FLOOR



Book Folding Workshop

Saturday 25 April 10am - 4pm
Library - Main Floor

Drop-in Book Folding Workshop with **Alyson Horton**: Turn old books into something totally new! Learn the art of book folding with Alyson and create your very own paper hedgehog to take home. Choose from three fun styles – it's crafty, creative, and helps keep books out of the landfill.

LIBRARY GROUND FLOOR

Workshop: Community Poetree with Attie Lime



Saturday 25 April 10am - 4pm
Library - Ground Floor

Attie Lime is a renowned local Writer who creates poetry for children. Join her to create a special poem made by the festival visitors themselves, inspired by the Derbyshire Makes theme. Attie has created a free-standing 'Community Poetree', made from 'junk' and recycling, and using simple prompts and writing activities, she will help you add a leaf and grow a poem!

THE DELPH



Exhibition: Burton & South Derbyshire College Pop-up Galleries

Saturday 25 April 10am - 4pm
The Delph

Photographic prints will be used to create 4 bespoke pop-up outdoor galleries transforming the structure of Market Trader Gazebos. **Burton and South Derbyshire College** have called the pop-up gallery 'Make Room'. Using the theme of 'Monozukuri', the Japanese word for the 'Spirit of Making' the galleries include the work from 7 students from Toyota City to create this installation for the festival.

See above, one of the new collections of **Maker Portraits** - local jeweller Louise Muttitt.



Forest Makers Workshop

Saturday 25 April 10am - 4pm
The Delph

Step into the world of woodcrafts at our Forest Makers' Market - showcasing local artisans in a handpicked celebration of craft inspired by the beauty, materials, and spirit of the National Forest.

Meet:

- Peter Wood** - world champion pole lathe turner and founder of Greenwood Days.
- Maggie Cooper** - traditional and contemporary basket weaver, furniture restorer, and willow artist.
- Caleb Kilpatrick** - who hand carves and decorates spoons.
- Darren Abel** - Swadlincote's traditional Woodsman.
- Katherine Brunt** - who connects with nature through the ancient craft of willow weaving.
- Brian Crosbie** - who makes Dulcimers and Cigar box guitars.

- Watch live craft demos
- Meet the makers and explore their wares
- Join a drop-in willow weaving workshop
- Try your hand at pedal-powered wood-turning on a traditional pole lathe
- See a spoon carver in action

Whether you're curious about traditional woodland crafts, keen to get hands-on, or simply want to browse beautiful handmade pieces, this is a rare chance to experience the craftsmanship and heritage rooted in our local landscape.



SPOTLIGHT ON!

Elaine Lim Newton

ClayMates Interview with Elaine Lim Newton by Cat Rogers. Elaine is Derby based ceramic artist and her work is inspired by natural forms. She creates exhibitions for fairs and selling and does lots of community work for hospitals and charities across the East Midlands.

CR: How did you come to work with clay?

ELN: I originally went to Derby University to do an Applied Arts course which was working with plastic, wood, metal and ceramic. I find drawing restrictive and I get bored quickly but I think you can make anything you want with clay. I've been doing it for 20 years and still feel like I've lots to learn. I enjoyed the challenge of clay and particularly working with others. A favourite part of my work is creating with participants, as it is always a collaboration and you see what is made. Clay is very grounding and meditative, when you are making it is easy to get lost in it. I find it is a material I can endlessly be creative with.

CR: Tell us about the ClayMates project

ELN: I've been working with Pingle Secondary School and Belmont Primary School in Swadlincote to make the ClayMates Exhibition and then there will be a public workshop for people who are inspired by the exhibition to make their own ClayMates. You will learn some easy building techniques to make a mini figure using tools and equipment and we'll take a photo of it with the others and then people can take it home to paint it. The idea is that everyone taking part will learn a new craft and they also get it back. We did a pilot project with Belmont last year to introduce the children to working with clay and they really loved it. They wanted to stay on longer and the teachers took part too. It was really nice seeing teachers and children working together. So, we decided to do a massive family inspired by the installation by artist, Anthony Gormley.

CR: How do you make a ClayMate?

ELN: I always gather local clay from Stoke and start with simple ball of clay, then manipulate it to create a head, neck and torso then add in elements like arms and clothes. Then I introduce hand building techniques such such as modelling, rolling, pressing in stamps and using wooden tools to make patterns in the clay. There are minimal instructions so there is creative space and I don't dictate what they make. In figures you can think who do I want to be or something completely fantastic using imagination – unicorn, family members, footballers, people with bananas on their head and fairies. There are lots of interesting characters to see so do come and look closely at the details. The exhibition is from 120 children and adults and will be on display in Sharpe's Museum. The chosen colours reflect heritage of Swadlincote's ceramic history like TG Green. The children have been inspired by this and other ceramic factories – so the colours are blue, brown, beige and green. It will be a lovely collection of graduating colours displayed so do come and have a look and then take part in festival and make your own!



SPOTLIGHT ON!

Louise Mary Designs

Louise Muttitt owner of Louise Mary Designs talks to Cat Rogers, freelance Project Manager for Derbyshire Makes at People Express about her work and what inspires it.

CR: Tell us about how you got into making jewellery

LM: I first had a go at silver smithing in my teens, in an evening class and I thought, 'amazing, I love this!' I grew up being creative in rural Herefordshire, and I was naturally drawn to smaller scale, everything small, that you could hold in your hands. For my GCSEs, my Design teacher, Mr Styles, allowed me write my own brief and I made a little jewellery collection inspired by Native American turquoise. I chose to do an Art Foundation after A levels but, in my head, I thought I needed a 'proper' job and focussed on product design and architecture. However, because I was able to creatively explore I was encouraged to go into jewellery because everything I was making was tiny. Amazingly, I haven't looked back - grappling with choices fuelled a determination and I chose the thing I really loved, and I now have 21 years' work experience. There is still so much to learn, it is such a huge subject - you can get ok quickly but to get good, takes time. The work is just so rewarding.

CR: Tell us about what inspires your work

LM: I am inspired by the process and I take inspiration from nature, for example layered petals or leaves which are then interpreted in metal. I discovered fold forming by accident during my degree. I loved Sheffield which is the home of making cutlery. I was trying to solve the problem of making a spoon out of a big bar, which you have to forge out, so the handle and spoon are strong. After my discovery I went on to write a book about the process and am the only UK author to do one on Fold Forming. I then went on to write a book on silver jewellery. Two books and two babies came over 3 years! I also managed to support my two children through my business, as I separated from my husband in 2017 after my son was born and this has shaped decisions. I do like to fly the flag for being someone who supports themselves financially through their creative business - 'proof it's possible'.

CR: What might people find if they come and see you in the Museum?

LM: My studio is at the museum and used to be the stairwell so I felt like Harry Potter. I have one bench for me and a bench for two others, so my workshops are bespoke for two people or three if it is a family. I have bookable workshops on my website so come and have fun. My workshop to make your own wedding rings is very popular. A family can bring their own gold or silver to melt. I recently had a lady in tears melting her grandfather's signet ring he was wearing when he passed away. It was such a beautiful moment and helped me to understand how important the stories can be. A lot of what I buy in is recycled because precious metals have high value and it is now properly traced and labelled. There is only so much gold, so it gets reused. There is a nice resourcefulness about it. Trying to be resourceful in how I live in life, how I was brought up and now I'm taking it to my business. On the 25th come and have a go at Fold Forming which will be interesting and different, I'm hoping to make little copper leaves so come and watch me work and ask questions. You can have a nose in the studio, and there will be a free raffle for one of my books if you sign up to the email list.



Things to browse or buy... markets and shopping.

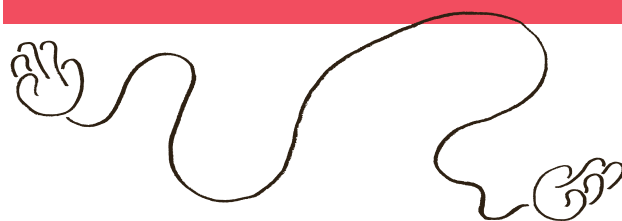
The Museum Shop will be selling original artwork by featured artists including Burton and South Derbyshire students' birdboxes. The Forest Makers will be on the Delph with demos workshops and items to purchase, Sweet Caroline Café at the Museum will be serving delicious cakes, lunch, and hot and cold drinks.

THANK YOU...

Derbyshire Makes in Swadlincote was programmed by People Express. Huge thanks to all of the venues, makers and volunteers and to:

- South Derbyshire District Council
- Simon Wardle, Market Trader Manager
- Burton and South Derbyshire College
- The National Forest
- SwadStyle
- Sharpe's Pottery
- Derbyshire County Council
- Arts Derbyshire
- Local
- Brewhouse Arts Centre
- Magic Attic
- Circularity
- Vicky Melbourne
- Catherine Rogers
- Hannah Wood
- Charlie Birtles
- Ingrid van der Weide
- Julie Fern
- Belmont Primary
- The Pingle Academy
- Kim Coe - Pro-Medical Ltd
- People Express Trustees
- Sharon Brown & Melbourne Festival
- SDDC Environmental Education
- South Derbyshire Miner's Preservation Group
- Origin Design (Melbourne)
- Neat Narrative Design (Swadlincote)
- John E Wrights Printers (Derby)

Special Thanks to:
the Hub Steering Group: Julia Dowding, Jo Maker, Hannah Barker, Louise Muttitt, Amanda Hill, Kate Allies, Felicity Towns, Peter Wood, Elaine Lim-Newton, Martin Wroughton, Melanie Biggs, Chris Beech, Stephanie Parker, Rebecca King
And everyone else who has supported the festival.



WHAT CAN YOU DO NEXT!



Workshop Ceramic Tealight House

Elaine Lim Newton
Sharpe's Pottery Museum
Thursday 7 May
10am - 1pm £40



Workshop Crafted in Clay

with Joanna Dawidowska
Learn to create expressive bird forms in clay.
Sharpe's Pottery Museum
Saturday 16 May 10am - 3.30pm £85

Booking online or via Sharpe's Museum front desk

SHARPE'S Pottery Museum
Magic Attic
Film Show

£4 only

Matinee Showing:
Thursday 30th April 2026
13:30 - 15:00pm

COSMOS CHOCOLAT

balfolk dance workshop + bal

KILNSIDE FOLK

TUESDAY APRIL 28TH

SWADLINCOTE TOWN HALL, DE11 0AG

7PM WORKSHOP // 8PM BAL

£15 / £20 / £12 / £5 under 16s / FREE for carers - pay what you can

SCAN FOR TICKETS
<https://bit.ly/40I9URK>

Proudly supported by...

Thank you for joining us at Derbyshire Makes Swadlincote.
We hope you have an amazing experience!
www.derbyshiremakes.co.uk

Derbyshire Makes aims to be inclusive and accessible to everyone. For any queries about this event, including accessibility, please contact People Express at:
julie.batten@people-express.org.uk